

REFERENCE: SF-950219

PROJECT: BP4.R027

STATE OF NORTH CAROLINA
DEPARTMENT OF TRANSPORTATION
DIVISION OF HIGHWAYS
GEOTECHNICAL ENGINEERING UNIT

STRUCTURE
SUBSURFACE INVESTIGATION

COUNTY WAYNE
PROJECT DESCRIPTION BRIDGE NO. 219 ON -L-
(SR 1505) OVER AYCOCK SWAMP
AT STA: 15+15

CONTENTS

SHEET NO.	DESCRIPTION
1	TITLE SHEET
2	LEGEND (SOIL & ROCK)
3	SITE PLAN
4	PROFILE
5-7	BORE LOGS

STATE	STATE PROJECT REFERENCE NO.	SHEET NO.	TOTAL SHEETS
N.C.	SF-950219	1	7

CAUTION NOTICE

THE SUBSURFACE INFORMATION AND THE SUBSURFACE INVESTIGATION ON WHICH IT IS BASED WERE MADE FOR THE PURPOSE OF PREPARING THE SCOPE OF WORK TO BE INCLUDED IN THE REQUEST FOR PROPOSAL. THE VARIOUS FIELD BORING LOGS, ROCK CORES AND SOIL TEST DATA AVAILABLE MAY BE REVIEWED OR INSPECTED IN RALEIGH BY CONTACTING THE N. C. DEPARTMENT OF TRANSPORTATION, GEOTECHNICAL ENGINEERING UNIT AT (919) 707-6850. THE SUBSURFACE PLANS AND REPORTS, FIELD BORING LOGS, ROCK CORES AND SOIL TEST DATA ARE NOT PART OF THE CONTRACT.

SOIL AND ROCK BOUNDARIES WITHIN A BOREHOLE ARE BASED ON GEOTECHNICAL INTERPRETATION UNLESS ENCOUNTERED IN A SAMPLE. INTERPRETED BOUNDARIES MAY NOT NECESSARILY REFLECT ACTUAL SUBSURFACE CONDITIONS BETWEEN SAMPLED STRATA AND BOREHOLE INFORMATION MAY NOT NECESSARILY REFLECT ACTUAL SUBSURFACE CONDITIONS BETWEEN BORINGS. THE LABORATORY SAMPLE DATA AND THE IN SITU (IN-PLACE) TEST DATA CAN BE RELIED ON ONLY TO THE DEGREE OF RELIABILITY INHERENT IN THE STANDARD TEST METHOD. THE OBSERVED WATER LEVELS OR SOIL MOISTURE CONDITIONS INDICATED IN THE SUBSURFACE INVESTIGATIONS ARE AS RECORDED AT THE TIME OF THE INVESTIGATION. THESE WATER LEVELS OR SOIL MOISTURE CONDITIONS MAY VARY CONSIDERABLY WITH TIME ACCORDING TO CLIMATIC CONDITIONS INCLUDING TEMPERATURES, PRECIPITATION AND WIND, AS WELL AS OTHER NON-CLIMATIC FACTORS.

THE BIDDER OR CONTRACTOR IS CAUTIONED THAT DETAILS SHOWN ON THE SUBSURFACE PLANS ARE PRELIMINARY ONLY AND IN MANY CASES THE FINAL DESIGN DETAILS ARE DIFFERENT. FOR BIDDING AND CONSTRUCTION PURPOSES, REFER TO THE CONSTRUCTION PLANS AND DOCUMENTS FOR FINAL DESIGN INFORMATION ON THIS PROJECT. THE DEPARTMENT DOES NOT WARRANT OR GUARANTEE THE SUFFICIENCY OR ACCURACY OF THE INVESTIGATION MADE, NOR THE INTERPRETATIONS MADE, OR OPINION OF THE DEPARTMENT AS TO THE TYPE OF MATERIALS AND CONDITIONS TO BE ENCOUNTERED. THE BIDDER OR CONTRACTOR IS CAUTIONED TO PERFORM INDEPENDENT SUBSURFACE INVESTIGATIONS AND MAKE INTERPRETATIONS AS NECESSARY TO CONFIRM CONDITIONS ENCOUNTERED ON THE PROJECT. THE CONTRACTOR SHALL HAVE NO CLAIM FOR ADDITIONAL COMPENSATION OR FOR AN EXTENSION OF TIME FOR ANY REASON RESULTING FROM THE ACTUAL CONDITIONS ENCOUNTERED AT THE SITE DIFFERING FROM THOSE INDICATED IN THE SUBSURFACE INFORMATION.

- NOTES:
- THE INFORMATION CONTAINED HEREIN IS NOT IMPLIED OR GUARANTEED BY THE N. C. DEPARTMENT OF TRANSPORTATION AS ACCURATE NOR IS IT CONSIDERED PART OF THE PLANS, SPECIFICATIONS OR CONTRACT FOR THE PROJECT.
 - BY HAVING REQUESTED THIS INFORMATION, THE CONTRACTOR SPECIFICALLY WAIVES ANY CLAIMS FOR INCREASED COMPENSATION OR EXTENSION OF TIME BASED ON DIFFERENCES BETWEEN THE CONDITIONS INDICATED HEREIN AND THE ACTUAL CONDITIONS AT THE PROJECT SITE.

PERSONNEL

S.N. ZIMARINO

T.W. MILLER

R.E. SMITH

C.M. WALKER

INVESTIGATED BY T.C. BOTTOMS

DRAWN BY T.W. MILLER

CHECKED BY D.N. ARGENBRIGHT

SUBMITTED BY D.N. ARGENBRIGHT

DATE SEPTEMBER 2022





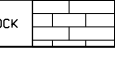
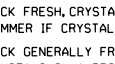
DocuSigned by:
Tyler Bottoms
SIGNATURE

01/23/2023

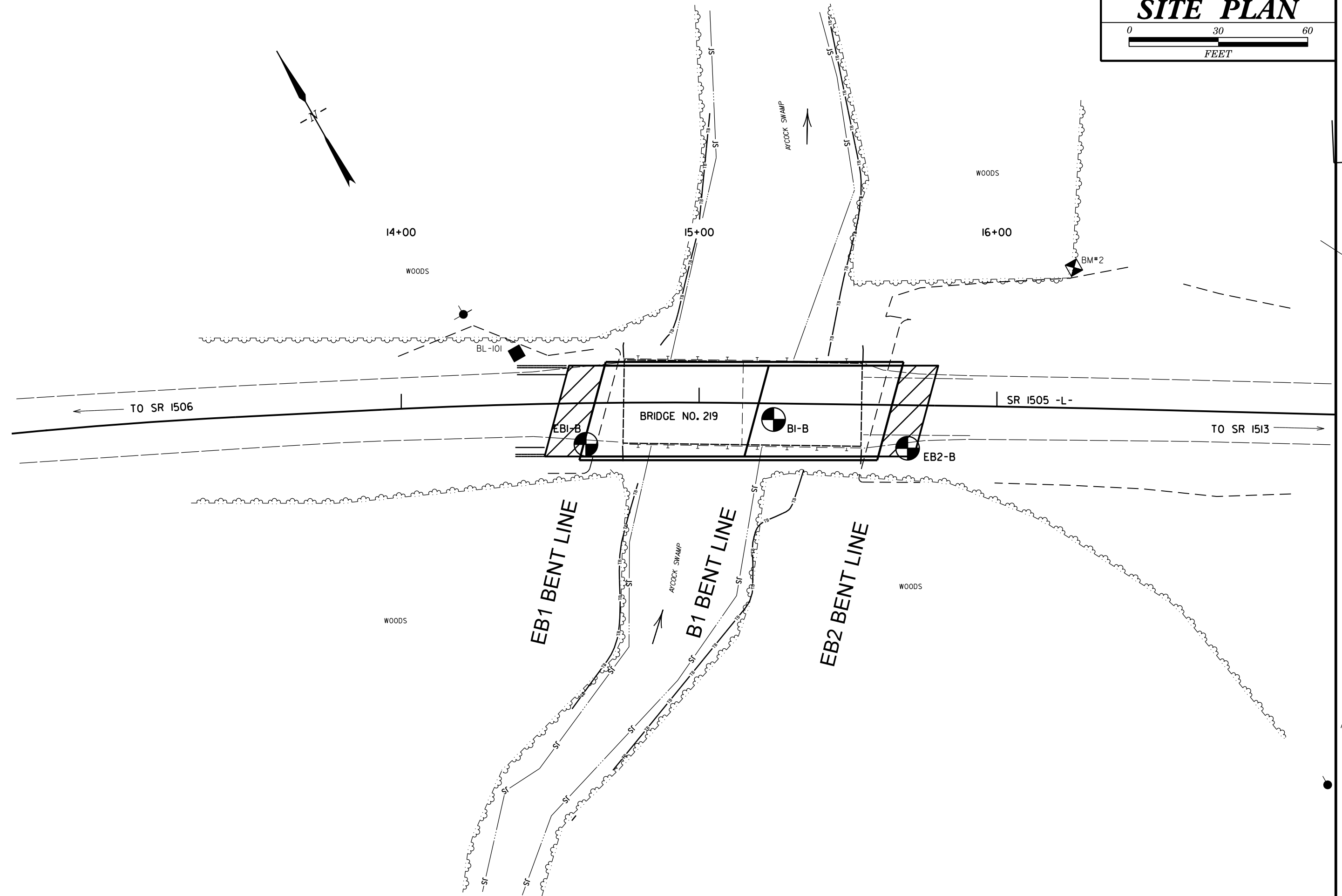
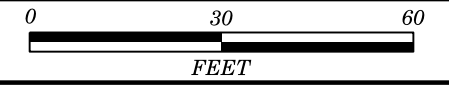
DATE

DOCUMENT NOT CONSIDERED FINAL
UNLESS ALL SIGNATURES COMPLETED

NORTH CAROLINA DEPARTMENT OF TRANSPORTATION
DIVISION OF HIGHWAYS
GEOTECHNICAL ENGINEERING UNIT
SUBSURFACE INVESTIGATION
SOIL AND ROCK LEGEND, TERMS, SYMBOLS, AND ABBREVIATIONS

SOIL DESCRIPTION										GRADATION										ROCK DESCRIPTION										TERMS AND DEFINITIONS									
SOIL IS CONSIDERED UNCONSOLIDATED, SEMI-CONSOLIDATED, OR WEATHERED EARTH MATERIALS THAT CAN BE PENETRATED WITH A CONTINUOUS FLIGHT POWER AUGER AND YIELD LESS THAN 100 BLOWS PER FOOT ACCORDING TO THE STANDARD PENETRATION TEST (ASTM T 206, ASTM D1586). SOIL CLASSIFICATION IS BASED ON THE AASHTO SYSTEM. BASIC DESCRIPTIONS GENERALLY INCLUDE THE FOLLOWING: CONSISTENCY, COLOR, TEXTURE, MOISTURE, AASHTO CLASSIFICATION, AND OTHER PERTINENT FACTORS SUCH AS MINERALOGICAL COMPOSITION, ANGULARITY, STRUCTURE, PLASTICITY, ETC. FOR EXAMPLE, <i>VERY STIFF, GRAY, SILTY CLAY, MOIST WITH INTERBEDDED FINE SAND LAYERS, HIGHLY PLASTIC, A-7-6</i>										WELL GRADED - INDICATES A GOOD REPRESENTATION OF PARTICLE SIZES FROM FINE TO COARSE. UNIFORMLY GRADED - INDICATES THAT SOIL PARTICLES ARE ALL APPROXIMATELY THE SAME SIZE. GAP-GRADED - INDICATES A MIXTURE OF UNIFORM PARTICLE SIZES OF TWO OR MORE SIZES.										HARD ROCK IS NON-COASTAL PLAIN MATERIAL THAT WOULD YIELD SPT REFUSAL IF TESTED, AN INFERRED ROCK LINE INDICATES THE LEVEL AT WHICH NON-COASTAL PLAIN MATERIAL WOULD YIELD SPT REFUSAL. SPT REFUSAL IS PENETRATION BY A SPLIT SPOON SAMPLER EQUAL TO OR LESS THAN 0.1 FOOT PER 60 BLOWS IN NON-COASTAL PLAIN MATERIAL. THE TRANSITION BETWEEN SOIL AND ROCK IS OFTEN REPRESENTED BY A ZONE OF WEATHERED ROCK. ROCK MATERIALS ARE TYPICALLY DIVIDED AS FOLLOWS:										ALLUVIUM (ALLUV.) - SOILS THAT HAVE BEEN TRANSPORTED BY WATER. AQUIFER - A WATER BEARING FORMATION OR STRATA. ARENACEOUS - APPLIED TO ROCKS THAT HAVE BEEN DERIVED FROM SAND OR THAT CONTAIN SAND. ARGILLACEOUS - APPLIED TO ALL ROCKS OR SUBSTANCES COMPOSED OF CLAY MINERALS, OR HAVING A NOTABLE PROPORTION OF CLAY IN THEIR COMPOSITION, SUCH AS SHALE, SLATE, ETC. ARTESIAN - GROUND WATER THAT IS UNDER SUFFICIENT PRESSURE TO RISE ABOVE THE LEVEL AT WHICH IT IS ENCOUNTERED, BUT WHICH DOES NOT NECESSARILY RISE TO OR ABOVE THE GROUND SURFACE. CALCAREOUS (CALC.) - SOILS THAT CONTAIN APPRECIABLE AMOUNTS OF CALCIUM CARBONATE. COLLUVIUM - ROCK FRAGMENTS MIXED WITH SOIL DEPOSITED BY GRAVITY ON SLOPE OR AT BOTTOM OF SLOPE. CORE RECOVERY (REC.) - TOTAL LENGTH OF ALL MATERIAL RECOVERED IN THE CORE BARREL DIVIDED BY TOTAL LENGTH OF CORE RUN AND EXPRESSED AS A PERCENTAGE. DIKE - A TABULAR BODY OF IGNEOUS ROCK THAT CUTS ACROSS THE STRUCTURE OF ADJACENT ROCKS OR CUTS MASSIVE ROCK. DIP - THE ANGLE AT WHICH A STRATUM OR ANY PLANAR FEATURE IS INCLINED FROM THE HORIZONTAL. DIP DIRECTION (DIP AZIMUTH) - THE DIRECTION OR BEARING OF THE HORIZONTAL TRACE OF THE LINE OF DIP, MEASURED CLOCKWISE FROM NORTH. FAULT - A FRACTURE OR FRACTURE ZONE ALONG WHICH THERE HAS BEEN DISPLACEMENT OF THE SIDES RELATIVE TO ONE ANOTHER PARALLEL TO THE FRACTURE. FISSILE - A PROPERTY OF SPLITTING ALONG CLOSELY SPACED PARALLEL PLANES. FLOAT - ROCK FRAGMENTS ON SURFACE NEAR THEIR ORIGINAL POSITION AND DISLOGGED FROM PARENT MATERIAL. FLOOD PLAIN (FP) - LAND BORDERING A STREAM, BUILT OF SEDIMENTS DEPOSITED BY THE STREAM. FORMATION (FM) - A MAPPABLE GEOLOGIC UNIT THAT CAN BE RECOGNIZED AND TRACED IN THE FIELD. JOINT - FRACTURE IN ROCK ALONG WHICH NO APPRECIABLE MOVEMENT HAS OCCURRED. LEDGE - A SHELF-LIKE RIDGE OR PROJECTION OF ROCK WHOSE THICKNESS IS SMALL COMPARED TO ITS LATERAL EXTENT. LENS - A BODY OF SOIL OR ROCK THAT THINS OUT IN ONE OR MORE DIRECTIONS. MOTTLED (MOT.) - IRREGULARLY MARKED WITH SPOTS OF DIFFERENT COLORS. MOTTLING IN SOILS USUALLY INDICATES POOR AERATION AND LACK OF GOOD DRAINAGE. PERCHED WATER - WATER MAINTAINED ABOVE THE NORMAL GROUND WATER LEVEL BY THE PRESENCE OF AN INTERVENING IMPERVIOUS STRATUM. RESIDUAL (RES.) SOIL - SOIL FORMED IN PLACE BY THE WEATHERING OF ROCK. ROCK QUALITY DESIGNATION (ROD) - A MEASURE OF ROCK QUALITY DESCRIBED BY TOTAL LENGTH OF ROCK SEGMENTS EQUAL TO OR GREATER THAN 4 INCHES DIVIDED BY THE TOTAL LENGTH OF CORE RUN AND EXPRESSED AS A PERCENTAGE. SAPROLITE (SAP.) - RESIDUAL SOIL THAT RETAINS THE RELIC STRUCTURE OR FABRIC OF THE PARENT ROCK. SILL - AN INTRUSIVE BODY OF IGNEOUS ROCK OF APPROXIMATELY UNIFORM THICKNESS AND RELATIVELY THIN COMPARED WITH ITS LATERAL EXTENT, THAT HAS BEEN EMPLACED PARALLEL TO THE BEDDING OR SCHISTOSITY OF THE INTRUDED ROCKS. SLICKENSIDE - POLISHED AND STRIATED SURFACE THAT RESULTS FROM FRICTION ALONG A FAULT OR SLIP PLANE. STANDARD PENETRATION TEST (PENETRATION RESISTANCE) (SPT) - NUMBER OF BLOWS (N OR BPF) OF A 140 LB. HAMMER FALLING 30 INCHES REQUIRED TO PRODUCE A PENETRATION OF 1 FOOT INTO SOIL WITH A 2 INCH OUTSIDE DIAMETER SPLIT SPOON SAMPLER. SPT REFUSAL IS PENETRATION EQUAL TO OR LESS THAN 0.1 FOOT PER 60 BLOWS. STRATA CORE RECOVERY (SREC.) - TOTAL LENGTH OF STRATA MATERIAL RECOVERED DIVIDED BY TOTAL LENGTH OF STRATUM AND EXPRESSED AS A PERCENTAGE. STRATA ROCK QUALITY DESIGNATION (SROD) - A MEASURE OF ROCK QUALITY DESCRIBED BY TOTAL LENGTH OF ROCK SEGMENTS WITHIN A STRATUM EQUAL TO OR GREATER THAN 4 INCHES DIVIDED BY THE TOTAL LENGTH OF STRATA AND EXPRESSED AS A PERCENTAGE. TOPSOIL (TS.) - SURFACE SOILS USUALLY CONTAINING ORGANIC MATTER.									
SOIL LEGEND AND AASHTO CLASSIFICATION										ANGULARITY OF GRAINS THE ANGULARITY OR ROUNDNESS OF SOIL GRAINS IS DESIGNATED BY THE TERMS: ANGULAR, SUBANGULAR, SUBROUNDED, OR ROUNDED.										WEATHERED ROCK (WR)  NON-COASTAL PLAIN MATERIAL THAT WOULD YIELD SPT N VALUES > 100 BLOWS PER FOOT IF TESTED.																			
MINERALOGICAL COMPOSITION MINERAL NAMES SUCH AS QUARTZ, FELDSPAR, MICA, TALC, KAOLIN, ETC. ARE USED IN DESCRIPTIONS WHEN THEY ARE CONSIDERED OF SIGNIFICANCE.										CRYSTALLINE ROCK (CR)  FINE TO COARSE GRAIN IGNEOUS AND METAMORPHIC ROCK THAT WOULD YIELD SPT REFUSAL IF TESTED. ROCK TYPE INCLUDES GRANITE, GNEISS, GABBRO, SCHIST, ETC.																													
COMPRESSION SLIGHTLY COMPRESSIBLE LL < 31 MODERATELY COMPRESSIBLE LL = 31 - 50 HIGHLY COMPRESSIBLE LL > 50										NON-CRYSTALLINE ROCK (NCR)  FINE TO COARSE GRAIN METAMORPHIC AND NON-COASTAL PLAIN SEDIMENTARY ROCK THAT WOULD YIELD SPT REFUSAL IF TESTED. ROCK TYPE INCLUDES PHYLLITE, SLATE, SANDSTONE, ETC.																													
PERCENTAGE OF MATERIAL										COASTAL PLAIN SEDIMENTARY ROCK (CPS)  COASTAL PLAIN SEDIMENTS CEMENTED INTO ROCK, BUT MAY NOT YIELD SPT REFUSAL. ROCK TYPE INCLUDES LIMESTONE, SANDSTONE, CEMENTED SHELL BEDS, ETC.																													
GROUND WATER										WEATHERING																													
ORGANIC MATERIAL GRANULAR SOILS SILT - CLAY SOILS OTHER MATERIAL TRACE OF ORGANIC MATTER 2 - 3% 3 - 5% TRACE 1 - 10% LITTLE ORGANIC MATTER 3 - 5% 5 - 12% LITTLE 10 - 20% MODERATELY ORGANIC 5 - 10% 12 - 20% SOME 20 - 35% HIGHLY ORGANIC > 10% > 20% HIGHLY 35% AND ABOVE										FRESH ROCK FRESH, CRYSTALS BRIGHT, FEW JOINTS MAY SHOW SLIGHT STAINING. ROCK RINGS UNDER HAMMER IF CRYSTALLINE. VERY SLIGHT (V SLI.) ROCK GENERALLY FRESH, JOINTS STAINED, SOME JOINTS MAY SHOW THIN CLAY COATINGS IF OPEN. CRYSTALS ON A BROKEN SPECIMEN FACE SHINE BRIGHTLY. ROCK RINGS UNDER HAMMER BLOWS IF OF A CRYSTALLINE NATURE. SLIGHT (SLI.) ROCK GENERALLY FRESH, JOINTS STAINED AND DISCOLORATION EXTENDS INTO ROCK UP TO 1 INCH. OPEN JOINTS MAY CONTAIN CLAY. IN GRANITOID ROCKS SOME OCCASIONAL FELDSPAR CRYSTALS ARE DULL AND DISCOLORED. CRYSTALLINE ROCKS RING UNDER HAMMER BLOWS. MODERATE (MOD.) SIGNIFICANT PORTIONS OF ROCK SHOW DISCOLORATION AND WEATHERING EFFECTS. IN GRANITOID ROCKS, MOST FELDSPARS ARE DULL AND DISCOLORED, SOME SHOW CLAY. ROCK HAS DULL SOUND UNDER HAMMER BLOWS AND SHOWS SIGNIFICANT LOSS OF STRENGTH AS COMPARED WITH FRESH ROCK. MODERATELY SEVERE (MOD. SEV.) ALL ROCK EXCEPT QUARTZ DISCOLORED OR STAINED. IN GRANITOID ROCKS, ALL FELDSPARS DULL AND DISCOLORED AND A MAJORITY SHOW KAOLINIZATION. ROCK SHOWS SEVERE LOSS OF STRENGTH AND CAN BE EXCAVATED WITH A GEOLOGIST'S PICK. ROCK GIVES "CLUNK" SOUND WHEN STRUCK. <i>IF TESTED, WOULD YIELD SPT REFUSAL</i> SEVERE (SEV.) ALL ROCK EXCEPT QUARTZ DISCOLORED OR STAINED. ROCK FABRIC CLEAR AND EVIDENT BUT REDUCED IN STRENGTH TO STRONG SOIL. IN GRANITOID ROCKS ALL FELDSPARS ARE KAOLINIZED TO SOME EXTENT. SOME FRAGMENTS OF STRONG ROCK USUALLY REMAIN. <i>IF TESTED, WOULD YIELD SPT N VALUES > 100 BPF</i> VERY SEVERE (V SEV.) ALL ROCK EXCEPT QUARTZ DISCOLORED OR STAINED. ROCK FABRIC ELEMENTS ARE DISCERNIBLE BUT MASS IS EFFECTIVELY REDUCED TO SOIL STATUS, WITH ONLY FRAGMENTS OF STRONG ROCK REMAINING. SAPROLITE IS AN EXAMPLE OF ROCK WEATHERED TO A DEGREE THAT ONLY MINOR VESTIGES OF ORIGINAL ROCK FABRIC REMAIN. <i>IF TESTED, WOULD YIELD SPT N VALUES < 100 BPF</i> COMPLETE ROCK REDUCED TO SOIL. ROCK FABRIC NOT DISCERNIBLE, OR DISCERNIBLE ONLY IN SMALL AND SCATTERED CONCENTRATIONS. QUARTZ MAY BE PRESENT AS DIKES OR STRINGERS. SAPROLITE IS ALSO AN EXAMPLE.																													
MISCELLANEOUS SYMBOLS										RECOMMENDATION SYMBOLS																													
ROADWAY EMBANKMENT (RE) WITH SOIL DESCRIPTION SOIL SYMBOL ARTIFICIAL FILL (AF) OTHER THAN ROADWAY EMBANKMENT INFERRED SOIL BOUNDARY INFERRED ROCK LINE ALLUVIAL SOIL BOUNDARY										DIP & DIP DIRECTION OF ROCK STRUCTURES SPT DMT VST PMT TEST BORING AUGER BORING CORE BORING MONITORING WELL PIEZOMETER INSTALLATION SPT N-VALUE										UNDERCUT SHALLOW UNDERCUT UNCLASSIFIED EXCAVATION - UNSUITABLE WASTE UNCLASSIFIED EXCAVATION - ACCEPTABLE DEGRADABLE ROCK UNCLASSIFIED EXCAVATION - ACCEPTABLE, BUT NOT TO BE USED IN THE TOP 3 FEET OF EMBANKMENT OR BACKFILL																			
CONSISTENCY OR DENSENESS										ABBREVIATIONS																													
PRIMARY SOIL TYPE COMPACTNESS OR CONSISTENCY RANGE OF STANDARD PENETRATION RESISTANCE (N-VALUE) RANGE OF UNCONFINED COMPRESSIVE STRENGTH (TONS/FT ²) GENERALLY GRANULAR MATERIAL (NON-COHESIVE) VERY LOOSE 4 TO 10 MEDIUM DENSE 10 TO 30 DENSE 30 TO 50 VERY DENSE > 50 GENERALLY SILT-CLAY MATERIAL (COHESIVE) VERY SOFT < 2 SOFT 2 TO 4 MEDIUM STIFF 4 TO 8 STIFF 8 TO 15 VERY STIFF 15 TO 30 HARD > 30										AR - AUGER REFUSAL BT - BORING TERMINATED CL - CLAY CPT - COARSE PENETRATION TEST CSE - COARSE DMT - DILATOMETER TEST DPT - DYNAMIC PENETRATION TEST e - VOID RATIO F - FINE FOSS. - FOSSILIFEROUS FRAC. - FRACTURED, FRACTURES FRAGS. - FRAGMENTS HI. - HIGHLY MED. - MEDIUM MICA. - MICACEOUS MOD. - MODERATELY NP - NON PLASTIC ORG. - ORGANIC PMT - PRESSUREMETER TEST SAP. - SAPROLITIC SD. - SAND, SANDY SL. - SILT, SILTY SLI. - SLIGHTLY TCR - TRICONE REFUSAL w - MOISTURE CONTENT V - VERY VST - VANE SHEAR TEST WEA. - WEATHERED % - UNIT WEIGHT %g - DRY UNIT WEIGHT SAMPLE ABBREVIATIONS S - BULK SS - SPLIT SPOON ST - SHELBY TUBE RS - ROCK RT - RECOMPACTED TRIAXIAL CBR - CALIFORNIA BEARING RATIO																													
TEXTURE OR GRAIN SIZE										EQUIPMENT USED ON SUBJECT PROJECT																													
U.S. STD. SIEVE SIZE OPENING (MM) 4 10 40 60 200 270 4.76 2.00 0.42 0.25 0.075 0.053 BOULDER (BLDR.) COBBLE (COB.) GRAVEL (GR.) COARSE SAND (CS. SD.) FINE SAND (F SD.) SILT (SL.) CLAY (CL.) GRAIN SIZE MM 305 75 2.0 0.25 0.05 0.005 IN. 12 3										DRILL UNITS: <input type="checkbox"/> CME-45C <input checked="" type="checkbox"/> CME-55 <input type="checkbox"/> CME-550 <input type="checkbox"/> VANE SHEAR TEST <input type="checkbox"/> PORTABLE HOIST <input type="checkbox"/> _____ <input type="checkbox"/> _____										ADVANCING TOOLS: <input type="checkbox"/> CLAY BITS <input type="checkbox"/> 6" CONTINUOUS FLIGHT AUGER <input type="checkbox"/> 8" HOLLOW AUGERS <input type="checkbox"/> HARD FACED FINGER BITS <input type="checkbox"/> TUNG-CARBIDE INSERTS <input checked="" type="checkbox"/> CASING <input type="checkbox"/> w/ ADVANCER <input checked="" type="checkbox"/> TRICONE 2 1/16" STEEL TEETH <input type="checkbox"/> TRICONE _____ TUNG-CARB. <input type="checkbox"/> CORE BIT <input type="checkbox"/> _____																			
SOIL MOISTURE - CORRELATION OF TERMS										FRACTURE SPACING										BEDDING																			
SOIL MOISTURE SCALE (ATTERBERG LIMITS) FIELD MOISTURE DESCRIPTION GUIDE FOR FIELD MOISTURE DESCRIPTION LL - LIQUID LIMIT PL - PLASTIC LIMIT OM - OPTIMUM MOISTURE SHRINKAGE LIMIT SL - SL - SATURATED - (SAT.) USUALLY LIQUID; VERY WET, USUALLY FROM BELOW THE GROUND WATER TABLE - WET - (W) SEMISOLID; REQUIRES DRYING TO ATTAIN OPTIMUM MOISTURE - MOIST - (M) SOLID; AT OR NEAR OPTIMUM MOISTURE - DRY - (D) REQUIRES ADDITIONAL WATER TO ATTAIN OPTIMUM MOISTURE										TERM SPACING VERY WIDE MORE THAN 10 FEET WIDE 3 TO 10 FEET MODERATELY CLOSE 1 TO 3 FEET CLOSE 0.16 TO 1 FOOT VERY CLOSE LESS THAN 0.16 FEET										TERM THICKNESS VERY THICKLY BEDDED 4 FEET THICKLY BEDDED 1.5 - 4 FEET THINLY BEDDED 0.16 - 1.5 FEET VERY THINLY BEDDED 0.03 - 0.16 FEET THICKLY LAMINATED 0.008 - 0.03 FEET THINLY LAMINATED < 0.008 FEET																			
PLASTICITY										INDURATION																													
NON PLASTIC 0-5 VERY LOW SLIGHTLY PLASTIC 6-15 SLIGHT MODERATELY PLASTIC 16-25 MEDIUM HIGHLY PLASTIC 26 OR MORE HIGH										FOR SEDIMENTARY ROCKS, INDURATION IS THE HARDENING OF MATERIAL BY CEMENTING, HEAT, PRESSURE, ETC. FRIABLE RUBBING WITH FINGER FREES NUMEROUS GRAINS; GENTLE BLOW BY HAMMER DISINTEGRATES SAMPLE. MODERATELY INDURATED GRAINS CAN BE SEPARATED FROM SAMPLE WITH STEEL PROBE; BREAKS EASILY WHEN HIT WITH HAMMER. INDURATED GRAINS ARE DIFFICULT TO SEPARATE WITH STEEL PROBE; DIFFICULT TO BREAK WITH HAMMER. EXTREMELY INDURATED SHARP HAMMER BLOWS REQUIRED TO BREAK SAMPLE; SAMPLE BREAKS ACROSS GRAINS.										BENCH MARK: BL-101 N: 663312.0080 E: 2325177.0200 ELEVATION: 89.36 FEET																			
COLOR DESCRIPTIONS MAY INCLUDE COLOR OR COLOR COMBINATIONS (TAN, RED, YELLOW-BROWN, BLUE-GRAY). MODIFIERS SUCH AS LIGHT, DARK, STREAKED, ETC. ARE USED TO DESCRIBE APPEARANCE.										NOTES:																													

SITE PLAN

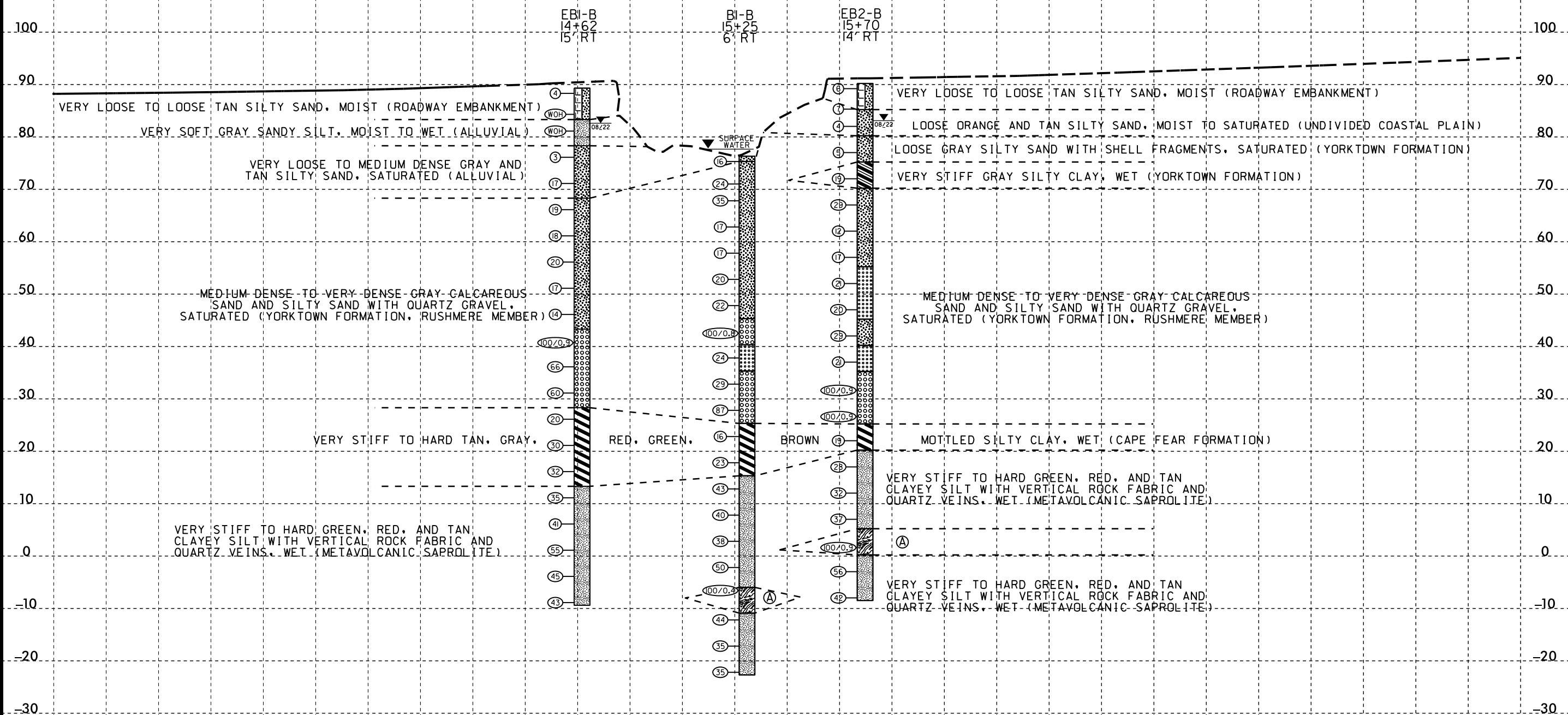


5/14/99

PROJECT REFERENCE NO. SF-950219	SHEET NO. 4
ROADWAY DESIGN ENGINEER	HYDRAULICS ENGINEER
INCOMPLETE PLANS DO NOT USE FOR R/W ACQUISITION	
DOCUMENT NOT CONSIDERED FINAL UNLESS ALL SIGNATURES COMPLETED	

PROFILE THROUGH BORINGS PROJECTED ALONG -L-

V.E. = 2



Ⓐ WEATHERED ROCK (METAVOLCANIC)

NOTE: GROUNDLINE PROFILE ALONG -L- TAKEN FROM BRIDGE SURVEY AND HYDRAULIC DESIGN REPORT DATED 8/15/22

NOTE: INFERRED STRATIGRAPHY IS DRAWN THROUGH THE BORINGS WITH BOTH PROJECTED ONTO THE PROFILE

12-SEP-2022 09:28
K:\SF-950219\GEO BRDG.PFL.dgn
\$\$\$\$\$

GEOTECHNICAL BORING REPORT

BORE LOG

WBS BP4.R027.1		TIP SF-950219		COUNTY WAYNE		GEOLOGIST Miller, T. W.									
SITE DESCRIPTION BRIDGE NO. 219 ON -L- (SR 1505) OVER AYCOCK SWAMP							GROUND WTR (ft)								
BORING NO. EB2-B		STATION 15+70		OFFSET 14 ft RT		ALIGNMENT -L-									
COLLAR ELEV. 90.2 ft		TOTAL DEPTH 98.7 ft		NORTHING 663,220		EASTING 2,325,276									
DRILL RIGHAMMER EFF./DATE RFO0074 CME-55 92% 08/02/2022			DRILL METHOD Mud Rotary			HAMMER TYPE Automatic									
DRILLER Walker, C. M.		START DATE 08/30/22		COMP. DATE 08/30/22		SURFACE WATER DEPTH N/A									
ELEV (ft)	DRIVE ELEV (ft)	DEPTH (ft)	BLOW COUNT			BLOWS PER FOOT					SAMP. NO.	LOG	SOIL AND ROCK DESCRIPTION	DEPTH (ft)	
			0.5ft	0.5ft	0.5ft	0	25	50	75	100					
95															
90	90.2	0.0	2	3	3									90.2	GROUND SURFACE
85	86.3	3.9	2	3	4									85.2	ROADWAY EMBANKMENT TAN SILTY SAND, MOIST (ROADWAY EMBANKMENT)
80	83.0	7.2	2	2	2									80.2	UNDIVIDED COASTAL PLAIN ORANGE AND TAN SILTY SAND, MOIST TO SATURATED (UNDIVIDED COASTAL PLAIN)
75	78.0	12.2	2	3	2									75.2	COASTAL PLAIN GRAY SILTY SAND WITH SHELL FRAGMENTS, (YORKTOWN FORMATION)
70	73.0	17.2	4	3	16									70.2	GRAY SANDY CLAY, WET (YORKTOWN FORMATION)
65	68.0	22.2	12	13	16									65.2	GRAY SAND AND SILTY SAND WITH QUARTZ GRAVEL (YORKTOWN FORMATION)
60	63.0	27.2	6	5	7									60.2	
55	58.0	32.2	5	8	9									55.2	
50	53.0	37.2	13	10	11									50.2	
45	48.0	42.2	8	9	11									45.2	
40	43.0	47.2	9	10	19									40.2	
35	38.0	52.2	10	10	11									35.2	
30	33.0	57.2	33	45	55/0.4									30.2	
25	28.0	62.2	50	65	35/0.4									25.2	
20	23.0	67.2	7	8	11									20.2	GREEN, RED AND TAN MOTTLED SILTY CLAY, WET (CAPE FEAR FORMATION)
15	18.0	72.2	9	12	16									15.2	SAPROLITE GREEN, RED, AND TAN CLAYEY SILT, WET (METAVOLCANIC)

WBS BP4.R027.1		TIP SF-950219		COUNTY WAYNE		GEOLOGIST Miller, T. W.									
SITE DESCRIPTION BRIDGE NO. 219 ON -L- (SR 1505) OVER AYCOCK SWAMP							GROUND WTR (ft)								
BORING NO. EB2-B		STATION 15+70		OFFSET 14 ft RT		ALIGNMENT -L-									
COLLAR ELEV. 90.2 ft		TOTAL DEPTH 98.7 ft		NORTHING 663,220		EASTING 2,325,276									
DRILL RIGHAMMER EFF./DATE RFO0074 CME-55 92% 08/02/2022			DRILL METHOD Mud Rotary			HAMMER TYPE Automatic									
DRILLER Walker, C. M.		START DATE 08/30/22		COMP. DATE 08/30/22		SURFACE WATER DEPTH N/A									
ELEV (ft)	DRIVE ELEV (ft)	DEPTH (ft)	BLOW COUNT			BLOWS PER FOOT					SAMP. NO.	LOG	SOIL AND ROCK DESCRIPTION	DEPTH (ft)	
			0.5ft	0.5ft	0.5ft	0	25	50	75	100					
15															
10	13.0	77.2	13	14	18									10.2	Match Line
5	8.0	82.2	14	17	20									5.2	SAPROLITE GREEN, RED, AND TAN CLAYEY SILT, WET (METAVOLCANIC) (continued)
0	3.0	87.2	18	32	68/0.4									0.2	WEATHERED ROCK (METAVOLCANIC)
-5	-2.0	92.2	14	26	30									-5.2	SAPROLITE GREEN, BROWN, RED, AND TAN SILT WITH QUARTZ VEINS AND MICA, WET (METAVOLCANIC)
-7.0	-7.0	97.2	12	17	25									-7.2	Boring Terminated at Elevation -8.5 ft METAVOLCANIC SAPROLITE

NCDOT BORE DOUBLE SF950219_GEO_BRDG.GPJ_NC_DOT.GDT 9/12/22